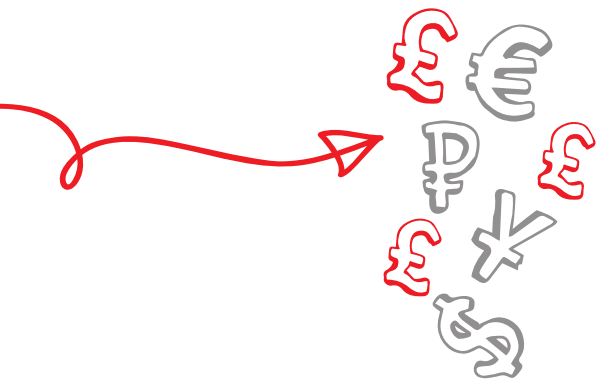


Fund codes and charges

January 2018



Fund codes and charges

The following tables contain details of the unique fund codes used by many online tools and services to identify a particular fund. As well as the most commonly used codes (SEDOL, ISIN, MEX and Citi), you will also find the fund management charge (Ongoing Charge Figure – OCF) for each fund. You should bear in mind that the OCF does not include product charges.

The funds are listed alphabetically and grouped by ABI sector.

To help you identify the correct fund for the product you are interested in, we have listed our most popular products below and shown which fund series they invest into.

Product	Fund series
CanInvest Select Account	Life Series 5 (LS5)
Flexible Investment Bond (Level Option)	Life Series 4 (LS4)
Flexible Investment Bond (Deferred Option)	Life Series 3 (LS3)
Total Access Bond	Life Series 3 (LS3)
Wealth Preservation Bond	Life Series 3 (LS3)
Select Investment Bond	Life Series 4 (LS4)
CanRetire Flexible Drawdown Plan	Pension Series 5 (PS5)
CanRetire Pension Investment Plan	Pension Series 5 (PS5)
Annuity Growth Account	Pension Series 4 (PS4)
Trustee Investment Plan	Pension Series 4 (PS4)
Flexible Pension Bond	Pension Series 4 (PS4)

If your product is not listed here and you are not sure which fund series it links to, please call us on **0345 6060708** (lines are open Monday to Friday 9am – 5pm) or send an email to customer.services@canadalife.co.uk.

The value of funds can fall as well as rise and you may not get back the amount that you invested.

Although all funds carry an element of risk, some funds have some more specific risks such as property funds or funds which specialise in a narrow range of assets. Where funds invest in assets overseas, changes in currency exchange rates can also affect a fund's value. At the end of this guide you will find additional information for specific funds which you should be aware of.

Mixed Investment Sectors

ABI sector

Mixed Investment | 0%–35% Shares

Fund name	Fund series	CITI	SEDOL	ISIN	MEX	OCF %
Canlife 7IM AAP Income	LS3	MH6J	BZONTB7	GB00BZONTB78	CLXXA	0.81
	LS4	MH6K	BZONTC8	GB00BZONTC85	CLXXB	0.81
	LS5	MH6L	BZONTD9	GB00BZONTD92	CLXXC	0.81
	PS4	MH6M	BZONTF1	GB00BZONTF17	CLXXD	0.81
	PS5	MH6N	BZONTG2	GB00BZONTG24	CLXXE	0.81
Canlife 7IM AAP Moderately Cautious	LS3	OWCU	B3YSZX8	GB00B3YSZX88	CLBAAA	0.69
	LS4	OWCV	B7L36S6	GB00B7L36S61	CLBAAB	0.69
	LS5	JL2P	BBMJDD5	GB00BBMJDD55	CLWOAC	0.69
	PS4	OWCW	B7GR0Q9	GB00B7GR0Q91	CLBAAC	0.69
	PS5	M4NY	BV9GMZ4	GB00BV9GMZ43	CLAADE	0.69
Canlife 7IM Personal Injury	LS3	MH6E	BZONTH3	GB00BZONTH31	CLXXF	0.69
	LS4	MH6F	BZONTJ5	GB00BZONTJ54	CLXXG	0.69
	LS5	MH6G	BZONTK6	GB00BZONTK69	CLXXH	0.69
	PS4	MH6H	BZONTL7	GB00BZONTL76	CLXXI	0.69
	PS5	MH6I	BZONTM8	GB00BZONTM83	CLXXJ	0.69
Canlife BlackRock Consensus 35	LS3	KDRE	BLM7D62	GB00BLM7D623	CLAABM	0.23
	LS4	KDRF	BLM7D73	GB00BLM7D730	CLAABN	0.23
	LS5	KDRG	BLM7D84	GB00BLM7D847	CLAABO	0.23
	PS4	KDRH	BLM7D95	GB00BLM7D953	CLAABP	0.23
	PS5	M4OH	BV9GMH6	GB00BV9GMH60	CLAACZ	0.23
Canlife Investec Diversified Income	LS3	VN14	B09H603	GB00B09H6039	CLIMDA	0.78
	LS4	VN15	B09H625	GB00B09H6252	CLIMD4	0.78
	LS5	JL4S	BBMJB31	GB00BBMJ313	CLABNO	0.78
	PS4	VN16	B09H647	GB00B09H6476	CLIPS4	0.78
	PS5	M4QW	BV9GPS8	GB00BV9GPS80	CLAAGK	0.78
Canlife JPM Global Macro Balanced	LS3	BYX0	B39Q366	GB00B39Q3666	CLJPC	0.81
	LS4	BYX1	B39Q377	GB00B39Q3773	CLJPMC	0.81
	LS5	JL4Z	BBMJCH2	GB00BBMJCH29	CLMABU	0.81
	PS4	BYX2	B39Q388	GB00B39Q3880	CLJCT	0.81
	PS5	M4RD	BV9GQ07	GB00BV9GQ076	CLAAES	0.81
Canlife Managed (0%–35% Shares)	LS3	C567	3268087	GB0032680877	CLDML3	0.31
	LS4	C568	3268065	GB0032680653	CLDML4	0.31
	LS5	JL5R	BBMJ9T3	GB00BBMJ9T33	CLABNC	0.31
	PS4	C569	3268032	GB0032680323	CLDMLP	0.30
	PS5	M4RW	BV9GQM9	GB00BV9GQM93	CLAAHX	0.10
Canlife Managed Money Plus	LS3	DXD2	B3K87R0	GB00B3K87R08	ALDCSP	0.27
	LS4	DXD3	B3K87S1	GB00B3K87S15	ALDECP	0.27
	LS5	JL5V	BBMJCQ1	GB00BBMJCQ10	CLGESA	0.27
	PS4	DXD7	B3K87T2	GB00B3K87T22	ALDCPS	0.27
	PS5	M4SA	BV9GQR4	GB00BV9GQR49	CLAAIB	0.27
Canlife Passive Portfolio 3	LS5	O1C3	BF0ZH53	GB00BF0ZH538	CLJTZZ	0.20
	PS5	O1C4	BF0ZH64	GB00BF0ZH645	CLJTQA	0.20
Canlife Portfolio 3	LS3	OWCZ	B3YZB20	GB00B3YZB200	CLBAAM	0.42
	LS4	OWCY	B7KKY51	GB00B7KKY519	CLBAAN	0.42
	LS5	JL6I	BBMJDC4	GB00BBMJDC49	CLWOL5	0.42
	PS4	OWD2	B7L2081	GB00B7L20815	CLBAAO	0.42
	PS5	M4SN	BV9GR59	GB00BV9GR595	CLAAFV	0.42

Mixed Investment | 20%–60% Shares

Canlife 7IM AAP Balanced	LS3	OWCO	B7M7QX2	GB00B7M7QX25	CLBAAD	0.67
	LS4	OWCP	B7MH2P6	GB00B7MH2P65	CLBAAE	0.67
	LS5	JL2N	BBMJDF7	GB00BBMJDF79	CLWOBA	0.67
	PS4	OWCQ	B7LLX67	GB00B7LLX673	CLBAAF	0.67
	PS5	M4NW	BV9GMX2	GB00BV9GMX29	CLAACT	0.67
Canlife BlackRock Consensus 60	LS3	KDRI	BLM7DB7	GB00BLM7DB70	CLAABQ	0.23
	LS4	KDRJ	BLM7DC8	GB00BLM7DC87	CLAABR	0.23
	LS5	KDRK	BLM7DD9	GB00BLM7DD94	CLAABS	0.23
	PS4	KDRL	BLM7DF1	GB00BLM7DF19	CLAABU	0.23
	PS5	M4OI	BV9GMJ8	GB00BV9GMJ84	CLAADA	0.23
Canlife CF Seneca Diversified Income	LS3	XA36	B06T9T2	GB00B06T9T20	CLMBI1	1.20
	LS4	XA37	B06T9V4	GB00B06T9V42	CLMBI2	1.20
	LS5	JL2Q	BBMJB19	GB00BBMJ198	CLABNL	1.20
	PS4	XA38	B06T9W5	GB00B06T9W58	CLMBI3	1.20
	PS5	M4OW	BV9GN39	GB00BV9GN396	CLAAAG	1.20

Fund name	Fund series	CITI	SEDOL	ISIN	MEX	OCF %
Canlife F&C MM Lifestyle Defensive	LS3	W672	B1VGD59	GB00B1VGD594	CLLSDL	1.00
	LS4	W671	B1VGD60	GB00B1VGD602	CLLDLS	1.00
	LS5	JL2Z	BBMJBK8	GB00BBMJBK82	CLABML	1.00
	PS4	W670	B1VGD71	GB00B1VGD719	CLLDPS	1.00
	PS5	M4PC	BV9GN95	GB00BV9GN958	CLAAHP	1.00
Canlife F&C MM Navigator Distribution	LS3	QW09	BONDDJ5	GB00BONDDJ51	CLCMD	1.47
	LS4	QW10	BONDJ86	GB00BONDJ860	CLCDI	1.47
	LS5	JL3C	BBMJB64	GB00BBMJB644	CLABNR	1.47
	PS4	QW11	BONDTC0	GB00BONDTC01	CLMDF	1.47
	PS5	M4PF	BV9GND9	GB00BV9GND97	CLAAHS	1.47
Canlife F&C MM Navigator Moderate	LS3	QW98	BONCVW1	GB00BONCVW12	CLMCA	1.65
	LS4	QW04	BONCW28	GB00BONCW287	CLCMU	1.65
	LS5	JL3D	BBMJB42	GB00BBMJB420	CLABNP	1.65
	PS4	QW05	BOND7C6	GB00BOND7C67	CLMCP	1.65
	PS5	M4PG	BV9GNF1	GB00BV9GNF12	CLAAHT	1.65
Canlife Fidelity Multi Asset Open Strategic	LS3	XA48	B06T2Y8	GB00B06T2Y87	CLFIP1	1.27
	LS4	XA49	B06T2Z9	GB00B06T2Z94	CLFIP2	1.27
	LS5	JL30	BBMJ9V5	GB00BBMJ9V54	CLABNE	1.27
	PS4	XA50	B06T301	GB00B06T3019	CLFIP3	1.27
	PS5	M4PR	BV9GNS4	GB00BV9GNS41	CLAADW	1.27
Canlife Janus Henderson Cautious Managed	LS3	C537	3261558	GB0032615584	CLNSML	0.72
	LS4	C538	3261729	GB0032617291	CLNSM4	0.72
	LS5	JL4B	BBMJ9K4	GB00BBMJ9K40	CLSOUT	0.72
	PS4	C539	3261730	GB0032617309	CLNSMP	0.72
	PS5	M4QF	BV9GP77	GB00BV9GP771	CLAAEG	0.72
Canlife Investec Cautious Managed	LS3	VN97	B09H5T5	GB00B09H5T56	CLICL3	0.75
	LS4	VN12	B09H5W8	GB00B09H5W85	CLICL4	0.75
	LS5	JL4R	BBMJB20	GB00BBMJB206	CLABNM	0.75
	PS4	VN13	B09H5Y0	GB00B09H5Y00	CLICP4	0.75
	PS5	M4QV	BV9GPR7	GB00BV9GPR73	CLAAGH	0.75
Canlife Jupiter Merlin Income Portfolio	LS3	MUF4	B657GS7	GB00B657GS71	CLAAAH	1.48
	LS4	MUF5	B66Q7R9	GB00B66Q7R99	CLAAAI	1.48
	LS5	JL5H	BBMJD79	GB00BBMJD798	CLGEBD	1.48
	PS4	MUF6	B6296L9	GB00B6296L92	CLAAAJ	1.48
	PS5	M4RL	BV9GQ85	GB00BV9GQ852	CLAAFJ	1.48
Canlife Managed (20%–60% Shares)	LS3	OZ94	BOZ74F8	GB00B0Z74F86	CLMDT	0.38
	LS4	OZ32	BOZ7M09	GB00B0Z7M099	CLMDA	0.38
	LS5	JL5S	BBMJB97	GB00BBMJB974	CLABNU	0.38
	PS4	OZ29	BOZ7M65	GB00B0Z7M651	CLMDI	0.37
	PS5	M4RX	BV9GQN0	GB00BV9GQN01	CLAAHY	0.37
Canlife Managed (50% Shares)	LS3	A187	0013161	GB0000131614	ALHILA	0.34
	LS4	O178	3201361	GB0032013616	CLCM	0.34
	LS5	JL5U	BBMJ8N0	GB00BBMJ8N06	CLMAGD	0.34
	PS4	HH60	0014067	GB0000140672	ALHIPA	0.33
	PS5	M4RZ	BV9GQQ3	GB00BV9GQQ32	CLAAIA	0.33
Canlife Passive Portfolio 4	LS5	O1C5	BF0ZH75	GB00BF0ZH751	CLJTQB	0.21
	PS5	O1C6	BF0ZH86	GB00BF0ZH868	CLJTQC	0.21
Canlife Portfolio 4	LS3	BLC1	B2QV5H2	GB00B2QV5H24	CLRPL3	0.49
	LS4	BLC2	B2QV5V6	GB00B2QV5V67	CLRPL4	0.49
	LS5	JL6J	BBMJCF0	GB00BBMJCF05	CLMABS	0.49
	PS4	BLC3	B2QTZ65	GB00B2QTZ655	CLRPP4	0.49
	PS5	M4S0	BV9GR60	GB00BV9GR603	CLAAFW	0.49
Mixed Investment 40%–85% Shares						
Canlife 7IM AAP Moderately Adventurous	LS3	OWCS	B7LJVJ0	GB00B7LJVJ09	CLBAAG	0.66
	LS4	OWCR	B7LKW4	GB00B7LKW49	CLBAAH	0.66
	LS5	JL20	BBMJDG8	GB00BBMJDG86	CLWOAD	0.66
	PS4	OWCT	B6XJH59	GB00B6XJH594	CLBAAI	0.66
	PS5	M4NX	BV9GMY3	GB00BV9GMY36	CLAADC	0.66
Canlife BlackRock Consensus 70	LS3	KDRN	BLM7DG2	GB00BLM7DG26	CLAAABW	0.23
	LS4	KDRO	BLM7DH3	GB00BLM7DH33	CLAAABY	0.23
	LS5	KDRM	BLM7DJ5	GB00BLM7DJ56	CLAAABT	0.23
	PS4	KDRP	BLM7DK6	GB00BLM7DK61	CLAAABV	0.23
	PS5	M40J	BV9GMK9	GB00BV9GMK99	CLAADB	0.23
Canlife BlackRock Consensus 85	LS3	KDRQ	BLM7DL7	GB00BLM7DL78	CLAAABX	0.22
	LS4	KDRR	BLM7DM8	GB00BLM7DM85	CLAAABZ	0.22
	LS5	KDRS	BLM7DN9	GB00BLM7DN92	CLAAACA	0.22
	PS4	KDRT	BLM7DP1	GB00BLM7DP17	CLAAACB	0.22
	PS5	M40K	BV9GML0	GB00BV9GML07	CLAAADD	0.22

Fund name	Fund series	CITI	SEDOL	ISIN	MEX	OCF %
Canlife CF Seneca Diversified Growth	LS3	XA39	B06T9Q9	GB00B06T9Q98	CLMBG1	1.28
	LS4	XA40	B06T9R0	GB00B06T9R06	CLMBG2	1.28
	LS5	JL2R	BBMJB08	GB00BBMJB081	CLABNK	1.28
	PS4	XA41	B06T9S1	GB00B06T9S13	CLMBG3	1.28
	PS5	M40V	BV9GN28	GB00BV9GN289	CLAAEF	1.28
Canlife F&C MM Lifestyle Balanced	LS3	W678	B1VGC22	GB00B1VGC225	CLLBSL	1.04
	LS4	W677	B1VGD04	GB00B1VGD040	CLLBSL	1.04
	LS5	JL2X	BBMJBH5	GB00BBMJBH53	CLABMJ	1.04
	PS4	W676	B1VGD15	GB00B1VGD156	CLCLBP	1.04
	PS5	M4PA	BV9GN73	GB00BV9GN735	CLAAHN	1.04
Canlife F&C MM Lifestyle Cautious	LS3	W675	B1VGD26	GB00B1VGD263	CLCFCL	1.02
	LS4	W674	B1VGD37	GB00B1VGD370	CLCFLS	1.02
	LS5	JL2Y	BBMJBJ7	GB00BBMJBJ77	CLABMK	1.02
	PS4	W673	B1VGD48	GB00B1VGD487	CLCLCS	1.02
	PS5	M4PB	BV9GN84	GB00BV9GN842	CLAAHO	1.02
Canlife F&C MM Navigator Progressive	LS3	QW12	B0N9T84	GB00B0N9T847	CLCMM	1.79
	LS4	QW13	B0N9ZP3	GB00B0N9ZP33	CLCMV	1.79
	LS5	JL3E	BBMJJB75	GB00BBMJJB750	CLABNS	1.79
	PS4	QW14	B0NB2L4	GB00B0NB2L40	CLCMP	1.79
	PS5	M4PH	BV9GNG2	GB00BV9GNG29	CLAAHU	1.79
Canlife Fidelity Multi Asset Open Growth	LS3	XA51	B06T2V5	GB00B06T2V56	CLFGP1	1.37
	LS4	XA52	B06T2W6	GB00B06T2W63	CLFGP2	1.37
	LS5	JL3N	BBMJ9W6	GB00BBMJ9W61	CLABNG	1.37
	PS4	XA53	B06T2X7	GB00B06T2X70	CLFGP3	1.37
	PS5	M4PQ	BV9GNR3	GB00BV9GNR34	CLAADV	1.37
Canlife Hargreaves Lansdown Multi-Manager Balanced Managed	LS5	N97E	BD0NW69	GB00BD0NW691	CLXXR	1.45
Canlife Janus Henderson Multi-Manager Managed	LS3	XA42	B06T550	GB00B06T5501	CLNSB1	1.54
	LS4	XA43	B06T561	GB00B06T5618	CLNSB2	1.54
	LS5	JL4H	BBMJ9X7	GB00BBMJ9X78	CLABNH	1.54
	PS4	XA44	B06T572	GB00B06T5725	CLNSB3	1.54
	PS5	M4QL	BV9GPF5	GB00BV9GPF51	CLAAFC	1.54
Canlife Invesco Perpetual Managed Income	LS3	C558	3262131	GB0032621319	CLIPW3	1.08
	LS4	C559	3262517	GB0032625179	CLIPW4	1.08
	LS5	JL40	BBMJ9Q0	GB00BBMJ9Q02	CLABND	1.08
	PS4	C560	3262528	GB0032625286	CLIPWP	1.08
	PS5	M4QS	BV9GPN3	GB00BV9GPN36	CLAAFT	1.08
Canlife Jupiter Merlin Balanced Portfolio	LS3	MUE8	B664YV6	GB00B664YV67	CLAAAB	1.63
	LS4	MUE9	B62CCB0	GB00B62CCB00	CLAAAC	1.63
	LS5	JL5F	BBMJJD57	GB00BBMJJD574	CLGEBL	1.63
	PS4	MUFO	B62MB46	GB00B62MB464	CLAAAD	1.63
	PS5	M4RJ	BV9GQ63	GB00BV9GQ639	CLAAFF	1.63
Canlife Managed (40%–85% Shares)	LS3	O156	3193156	GB0031931560	CLBML	0.43
	LS4	O176	3201349	GB0032013491	CLBM	0.43
	LS5	JL5T	BBMJ937	GB00BBMJ9379	CLMAED	0.43
	PS4	O157	3193167	GB0031931677	CLBMP	0.43
	PS5	M4RY	BV9GQP2	GB00BV9GQP25	CLAAHZ	0.56
Canlife Multiple Investment	LS3	AE14	0012339	GB0000123397	ALMIA	0.39
	LS4	O194	3202814	GB0032028143	CLMIL	0.39
	LS5	JL5X	BBMJ8P2	GB00BBMJ8P20	CLINVS	0.39
	PS4	AE76	0013439	GB0000134394	ALMIPA	0.40
	PS5	M4SC	BV9GQT6	GB00BV9GQT62	CLAAGY	0.40
Canlife Neptune Balanced	LS3	BYY2	B39Q333	GB00B39Q3336	CLCNB	0.83
	LS4	BYY3	B39Q344	GB00B39Q3443	CLNBA	0.83
	LS5	JL5Y	BBMJJC4	GB00BBMJJC43	CLMAOB	0.83
	PS4	BYY4	B39Q355	GB00B39Q3559	CLNBB	0.83
	PS5	M4SD	BV9QV8	GB00BV9QV84	CLAAGZ	0.83
Canlife Passive Portfolio 5	LS5	O1C7	BF0ZH97	GB00BF0ZH975	CLJTQD	0.22
	PS5	O1C8	BF0ZHB9	GB00BF0ZHB96	CLJTQE	0.22
Canlife Passive Portfolio 6	LS5	O1C9	BF0ZHC0	GB00BF0ZHC04	CLJTQF	0.22
	PS5	O1CA	BF0ZHD1	GB00BF0ZHD11	CLJTQG	0.22
Canlife Portfolio 5	LS3	BLB5	B2QTZJ8	GB00B2QTZJ86	CLCPL3	0.57
	LS4	BLB6	B2QTZX2	GB00B2QTZX21	CLCPL4	0.57
	LS5	JL6K	BBMJCD8	GB00BBMJCD80	CLMABR	0.57
	PS4	BLB7	B2QTYV3	GB00B2QTYV32	CLCPP4	0.57
	PS5	M4SP	BV9GR71	GB00BV9GR710	CLAAFX	0.57

Fund name	Fund series	CITI	SEDOL	ISIN	MEX	OCF %
Canlife Portfolio 6	LS3	BLC4	B2QV635	GB00B2QV6354	CLSPL3	0.62
	LS4	BLC5	B2QV958	GB00B2QV9580	CLSPL4	0.62
	LS5	JL6L	BBMJCC7	GB00BBMJCC73	CLMABQ	0.62
	PS4	BLC6	B2QTY35	GB00B2QTY351	CLSP4	0.61
	PS5	M4SQ	BV9GR82	GB00BV9GR827	CLAAFY	0.61
Canlife Premier Multi-Asset Growth & Income	LS3	MPHR	BZONTN9	GB00BZONTN90	CLXXN	1.60
	LS4	MPHS	BZONTP1	GB00BZONTP15	CLXXM	1.60
	LS5	MPHT	BZONTQ2	GB00BZONTQ22	CLXXN	1.60
	PS4	MPHU	BZONTR3	GB00BZONTR39	CLXXO	1.60
	PS5	MPHV	BZONTS4	GB00BZONTS46	CLXXP	1.60
Canlife UK Equity and Bond Income	LS3	I5ZT	B8GQCN4	GB00B8GQCN45	CLOMEA	0.49
	LS4	I5ZU	B7YH1S0	GB00B7YH1S01	CLOMEB	0.49
	LS5	JL7C	BBMJDW4	GB00BBMJDW45	CLETME	0.49
	PS4	I5ZV	B8B7X28	GB00B8B7X286	CLOMED	0.49
	PS5	M4TJ	BV9GRX7	GB00BV9GRX73	CLAACO	0.49
Flexible Investment						
Canlife 7IM AAP Adventurous	LS3	OWD0	B716WC1	GB00B716WC11	CLBAAJ	0.68
	LS4	OWD1	B735NS9	GB00B735NS94	CLBAAK	0.68
	LS5	JL2M	BBMJDH9	GB00BBMJDH93	CLWOCF	0.68
	PS4	OWCN	B72Y6D3	GB00B72Y6D31	CLBAAL	0.68
	PS5	M4NV	BV9GMW1	GB00BV9GMW12	CLAADN	0.68
Canlife Artemis Strategic Assets	LS3	G205	B42QXZ9	GB00B42QXZ97	CLASTA	0.86
	LS4	G206	B45CRK7	GB00B45CRK79	CLARTS	0.86
	LS5	JL2B	BBMJCV6	GB00BBMJCV62	CLGEFI	0.86
	PS4	G207	B46DKV1	GB00B46DKV14	CLASAP	0.86
	PS5	M40C	BV9GMC1	GB00BV9GMC16	CLAACV	0.86
Canlife CF Miton Cautious Multi Asset	LS3	GUV3	B4W26H0	GB00B4W26H09	CLCMSP	0.82
	LS4	GUV4	B4VKB25	GB00B4VKB255	CLFMSP	0.82
	LS5	JL2S	BBMJJD24	GB00BBMJJD244	CLGE4L	0.82
	PS4	GUV5	B4VKBN6	GB00B4VKBN62	CLTHRC	0.82
	PS5	M40T	BV9GN06	GB00BV9GN065	CLAADP	0.82
Canlife CF Miton Defensive Multi Asset	LS3	GUV0	B4W23M4	GB00B4W23M47	CLCFMO	0.92
	LS4	GUV1	B4W2421	GB00B4W24217	CLCFTO	0.92
	LS5	JL2T	BBMJJD13	GB00BBMJJD137	CLGE5L	0.92
	PS4	GUV2	B4W2614	GB00B4W26147	CLCMSS	0.92
	PS5	M40U	BV9GN17	GB00BV9GN172	CLAAEE	0.92
Canlife F&C MM Lifestyle Growth	LS3	W669	B1VGD82	GB00B1VGD826	CLLGC	1.07
	LS4	W668	B1VGD85	GB00B1VGD855	CLSLGL	1.07
	LS5	JL3A	BBMJBL9	GB00BBMJBL99	CLABMN	1.07
	PS4	W667	B1VGCY1	GB00B1VGCY18	CLFLCP	1.07
	PS5	M4PD	BV9GNB7	GB00BV9GNB73	CLAAHQ	1.07
Canlife F&C MM Navigator Select	LS3	QW06	B0NBF60	GB00B0NBF607	CLMGL	1.82
	LS4	QW07	B0NBH5	GB00B0NBH51	CLCMG	1.82
	LS5	JL3F	BBMJJB53	GB00BBMJJB537	CLABNQ	1.82
	PS4	QW08	B0NBK1	GB00B0NBK10	CLMGR	1.82
	PS5	M4PI	BV9GNH3	GB00BV9GNH36	CLAAHV	1.82
Canlife Janus Henderson Multi-Manager Active	LS3	XA45	B06T527	GB00B06T5279	CLNSA1	1.56
	LS4	XA46	B06T538	GB00B06T5386	CLNSA2	1.56
	LS5	JL4G	BBMJ9Y8	GB00BBMJ9Y85	CLABNI	1.56
	PS4	XA47	B06T549	GB00B06T5493	CLNSA3	1.56
	PS5	M4QK	BV9GPD3	GB00BV9GPD38	CLAAFB	1.56
Canlife Jupiter Merlin Growth Portfolio	LS3	MUF1	B3Q12G7	GB00B3Q12G70	CLAAAE	1.73
	LS4	MUF2	B3MVLG4	GB00B3MVLG43	CLAAAF	1.73
	LS5	JL5G	BBMJJD68	GB00BBMJJD681	CLGEBI	1.73
	PS4	MUF3	B63NS14	GB00B63NS142	CLAAAG	1.73
	PS5	M4RK	BV9GQ74	GB00BV9GQ746	CLAAFH	1.73
Canlife Passive Portfolio 7	LS5	O1CB	BF0ZHF3	GB00BF0ZHF35	CLJTQH	0.24
	PS5	O1CC	BF0ZHG4	GB00BF0ZHG42	CLJTQI	0.24
Canlife Portfolio 7	LS3	BLB8	B2QV378	GB00B2QV3781	CLGPL3	0.68
	LS4	BLB9	B2QV505	GB00B2QV5059	CLGPL4	0.68
	LS5	JL6M	BBMJCG1	GB00BBMJCG12	CLMABT	0.68
	PS4	BLC0	B2QTZ10	GB00B2QTZ101	CLGPP4	0.68
	PS5	M4SR	BV9GR93	GB00BV9GR934	CLAAGA	0.68

Fund name	Fund series	CITI	SEDOL	ISIN	MEX	OCF %
-----------	-------------	------	-------	------	-----	-------

UK Equity Fund Sectors

UK All Companies

Canlife AXA Framlington UK Select Opportunities	LS3	C549	3264610	GB0032646100	CLFUK3	0.83
	LS4	C550	3265334	GB0032653346	CLFUK4	0.83
	LS5	JL3U	BBMJ9L5	GB00BBMJ9L56	CLOPUT	0.83
	PS4	C551	3265345	GB0032653452	CLFUKP	0.83
	PS5	M4PX	BV9GNZ1	GB00BV9GNZ18	CLAAEH	0.83
Canlife BlackRock UK Special Situations	LS3	AE26	0722315	GB0007223158	ALMRLA	0.85
	LS4	OI89	3201822	GB0032018227	CLUKV4	0.85
	LS5	JL2J	BBMJ8Z2	GB00BBMJ8Z28	CLSUON	0.85
	PS4	AE28	0722326	GB0007223265	ALMRPA	0.85
	PS5	M40Q	BV9GMS7	GB00BV9GMS75	CLAADK	0.85
Canlife British Blue Chip	LS3	HH33	0013138	GB0000131382	ALBCLA	0.40
	LS4	OI88	3201350	GB0032013509	CLBBC	0.40
	LS5	JL2L	BBMJ8H4	GB00BBMJ8H46	CLUELB	0.40
	PS4	HH58	0014045	GB0000140458	ALBCPA	0.40
	PS5	M40S	BV9GMV0	GB00BV9GMV05	CLAADM	0.40
Canlife Fidelity Special Situations	LS3	C546	3263338	GB0032633389	CLFSS3	0.94
	LS4	C547	3263350	GB0032633504	CLFSS4	0.94
	LS5	JL3P	BBMJ9H1	GB00BBMJ9H11	CLSNIY	0.94
	PS4	C548	3263349	GB0032633496	CLFSSP	0.94
	PS5	M4PS	BV9GNT5	GB00BV9GNT57	CLAADX	0.94
Canlife Invesco Perpetual High Income	LS3	AKE6	B23K516	GB00B23K5160	CLHI3	0.92
	LS4	AKE5	B23K4D1	GB00B23K4D19	CLHI4	0.92
	LS5	JL4L	BBMJ8H4	GB00BBMJ8H46	CLBMS	0.92
	PS4	AKE4	B23K549	GB00B23K5491	CLHIP4	0.92
	PS5	M4QP	BV9GPK0	GB00BV9GPK05	CLAAFK	0.92
Canlife Invesco Perpetual Income	LS3	C564	3261741	GB0032617416	CLIPL3	0.91
	LS4	C565	3261752	GB0032617523	CLIPL4	0.91
	LS5	JL4M	BBMJ9R1	GB00BBMJ9R19	CLABNA	0.91
	PS4	C566	3261763	GB0032617630	CLIPP4	0.91
	PS5	M4QQ	BV9GPL1	GB00BV9GPL12	CLAAFQ	0.91
Canlife Invesco Perpetual UK Growth	LS3	C561	3261989	GB0032619891	CLIPG3	0.91
	LS4	C562	3261990	GB0032619909	CLIPG4	0.91
	LS5	JL4Q	BBMJ9S2	GB00BBMJ9S26	CLABNB	0.91
	PS4	C563	3262001	GB0032620014	CLIUG4	0.91
	PS5	M4QU	BV9GPQ6	GB00BV9GPQ66	CLAAE	0.91
Canlife Investec UK Special Situations	LS3	GGKA	B8LF8V6	GB00B8LF8V65	CLNTAJ	0.84
	LS4	GGKB	B8LF924	GB00B8LF9241	CLNTAK	0.84
	LS5	JL4W	BBMJDP7	GB00BBMJDP77	CLSPIA	0.84
	PS4	GGKC	B8LF9F7	GB00B8LF9F72	CLNTAL	0.84
	PS5	M4RA	BV9GPX3	GB00BV9GPX34	CLAAEN	0.84
Canlife iShares UK Equity Index	LS3	O1BW	BF0ZGY5	GB00BF0ZGY58	CLJTZS	0.06
	LS4	O1BX	BF0ZGZ6	GB00BF0ZGZ65	CLJTZT	0.06
	LS5	O1BY	BF0ZH08	GB00BF0ZH082	CLJTZU	0.06
	PS4	O1BZ	BF0ZH19	GB00BF0ZH199	CLJTZV	0.06
	PS5	O1CO	BF0ZH20	GB00BF0ZH207	CLJTZW	0.06
Canlife Jupiter UK Growth	LS3	AKD2	B23K1S5	GB00B23K1S56	CLJUG3	1.02
	LS4	AKD1	B23K1Y1	GB00B23K1Y17	CLJUG4	1.02
	LS5	JL5J	BBMJBT7	GB00BBMJBT75	CLABMV	1.02
	PS4	AKDO	B23JNC0	GB00B23JNC07	CLJGP4	1.02
	PS5	M4RN	BV9GQB8	GB00BV9GQB88	CLAAFM	1.02
Canlife M&G Recovery	LS3	G859	B1FMP79	GB00B1FMP797	CLLS3R	0.90
	LS4	G858	B1FMP80	GB00B1FMP805	CLLS4R	0.90
	LS5	JL5P	BBMJBG4	GB00BBMJBG47	CLABMI	0.90
	PS4	G857	B1FMP91	GB00B1FMP912	CLMPS4	0.90
	PS5	M4RT	BV9GQJ6	GB00BV9GQJ64	CLAAAGV	0.90
Canlife Schroder UK Mid 250	LS3	OI74	3193178	GB0031931784	CLUML	0.91
	LS4	C192	3203947	GB0032039470	CSUMZ	0.91
	LS5	JL6R	BBMJ971	GB00BBMJ9718	CLORDS	0.91
	PS4	OI75	3193189	GB0031931891	CLUMP	0.91
	PS5	M4SW	BV9GRG0	GB00BV9GRG09	CLAAAGG	0.91

Fund name	Fund series	CITI	SEDOL	ISIN	MEX	OCF %
Canlife SVM UK Opportunities	LS3	AG69	0950503	GB0009505032	ALCULA	0.80
	LS4	C195	3203969	GB0032039694	CSUG	0.80
	LS5	JL6U	BBMJ8R4	GB00BBMJ8R44	CLKUOP	0.80
	PS4	AG72	0950495	GB0009504951	ALCUPA	0.80
	PS5	M4TA	BV9GRL5	GB00BV9GRL51	CLAAGM	0.80
Canlife UK Equity	LS3	AE02	0012232	GB0000122324	ALEQA	0.40
	LS4	C200	3204014	GB0032040148	CUKE	0.40
	LS5	JL7E	BBMJ8J6	GB00BBMJ8J69	CLEQAL	0.40
	PS4	AE62	0013633	GB0000136332	ALEQPA	0.40
	PS5	M4TL	BV9GRW6	GB00BV9GRW66	CLAACN	0.40
UK Equity Income						
Canlife Artemis Income	LS3	A0C5	B23WYK4	GB00B23WYK49	CLAI3	0.79
	LS4	A0C6	B23WYS2	GB00B23WYS25	CLAI4	0.79
	LS5	JL2A	BBMJBW0	GB00BBMJBW05	CLABMX	0.79
	PS4	A0C7	B23WYW6	GB00B23WYW60	CLAIP4	0.79
	PS5	M40B	BV9GMB0	GB00BV9GMB09	CLAACU	0.79
Canlife AXA Framlington Monthly Income	LS3	C555	3264319	GB0032643198	CLFEL3	0.84
	LS4	C556	3264331	GB0032643313	CLFEL4	0.84
	LS5	JL3S	BBMJ9M6	GB00BBMJ9M63	CLOMIN	0.84
	PS4	C557	3264568	GB0032645680	CLFEP4	0.84
	PS5	M4PV	BV9GNX9	GB00BV9GNX93	CLAAEC	0.84
Canlife CF Woodford Equity Income	LS3	KTEX	BQLDM25	GB00BQLDM255	CLAAK1	0.75
	LS4	KTEY	BQLDM36	GB00BQLDM362	CLAAK2	0.75
	LS5	KTEZ	BQLDM47	GB00BQLDM479	CLAAK3	0.75
	PS4	KTFA	BQLDM58	GB00BQLDM586	CLAAK4	0.75
	PS5	M40X	BV9GN40	GB00BV9GN404	CLAAHK	0.75
Canlife F&C Responsible UK Income	LS3	QW15	B0NBZD7	GB00B0NBZD79	CLCST	0.80
	LS4	QW16	B0NC6W6	GB00B0NC6W66	CLSTI	0.80
	LS5	JL3G	BBMJ866	GB00BBMJ8667	CLABNT	0.80
	PS4	QW17	B0NCVQ5	GB00B0NCVQ51	CLSIP	0.80
	PS5	M4PK	BV9GNK6	GB00BV9GNK64	CLAADO	0.80
Canlife Jupiter Income Trust	LS3	AKD5	B23JZN5	GB00B23JZN59	CLJIT3	0.94
	LS4	AKD4	B23K0F5	GB00B23K0F52	CLJIT4	0.94
	LS5	JL5E	BBMJBS6	GB00BBMJBS68	CLABMU	0.94
	PS4	AKD3	B23K185	GB00B23K1854	CLJIP4	0.94
	PS5	M4RI	BV9GQ52	GB00BV9GQ522	CLAAFD	0.94
Canlife Neptune Income	LS3	BYX9	B39Q300	GB00B39Q3005	CLCNN	0.83
	LS4	BYY0	B39Q311	GB00B39Q3112	CLCNL	0.83
	LS5	JL6B	BBMJCK5	GB00BBMJCK57	CLMAOC	0.83
	PS4	BYY1	B39Q322	GB00B39Q3229	CLNIAA	0.83
	PS5	M4SG	BV9GQY1	GB00BV9GQY16	CLAAHC	0.83
Canlife Schroder Income Maximiser	LS3	BBI3	B2RKKY0	GB00B2RKKY09	CLSIM3	0.91
	LS4	BBI4	B2RKKZ1	GB00B2RKKZ16	CLSIM4	0.91
	LS5	JL6P	BBMJC83	GB00BBMJC832	CLMABN	0.91
	PS4	BBI5	B2RKL03	GB00B2RKL033	CLSIMP	0.91
	PS5	M4SU	BV9GRD7	GB00BV9GRD77	CLAAGD	0.91
Canlife UK Equity Income	LS3	C513	3240449	GB0032404492	CLS3	0.47
	LS4	C514	3240212	GB0032402124	CLS4	0.47
	LS5	JL7D	BBMJ9P9	GB00BBMJ9P94	CLETYI	0.47
	PS4	C515	3242393	GB0032423930	CLS4P	0.47
	PS5	M4TK	BV9GRY8	GB00BV9GRY80	CLAAPC	0.47
UK Smaller Companies						
Canlife Investec UK Smaller Companies	LS3	BOC2	B2R35V1	GB00B2R35V17	CLSAL3	0.83
	LS4	BOC3	B2R35Z5	GB00B2R35Z54	CLSAL4	0.83
	LS5	JL4V	BBMJCB6	GB00BBMJCB66	CLMABP	0.83
	PS4	BOC4	B2R35X3	GB00B2R35X31	CLSAP4	0.83
	PS5	M4QZ	BV9GPW2	GB00BV9GPW27	CLAAEK	0.83
Canlife Schroder UK Smaller Companies	LS3	C570	3193190	GB0031931909	CLSCL	0.91
	LS4	C193	3203152	GB0032031527	CSUKS	0.91
	LS5	JL6S	BBMJ993	GB00BBMJ9932	CLSMLE	0.91
	PS4	C571	3193208	GB0031932089	CLSCP	0.91
	PS5	M4SX	BV9GRH1	GB00BV9GRH16	CLAAGI	0.91

Fund name	Fund series	CITI	SEDOL	ISIN	MEX	OCF %
Overseas Equities Sectors						
Europe excluding UK Equities						
Canlife Artemis European Growth	LS3	AOC2	B23WY93	GB00B23WY939	CLAEG3	0.89
	LS4	AOC3	B23WYC6	GB00B23WYC64	CLAEG4	0.89
	LS5	JL1Z	BBMJBV9	GB00BBMJBV97	CLABMW	0.89
	PS4	AOC4	B23WYB5	GB00B23WYB57	CLAEP4	0.89
	PS5	M40A	BV9GM98	GB00BV9GM984	CLAACS	0.89
Canlife European	LS3	AE04	0012210	GB0000122100	ALEUA	0.47
	LS4	OI79	3201372	GB0032013723	CLEU	0.47
	LS5	JL2V	BBMJ8T6	GB00BBMJ8T67	CLPEAN	0.47
	PS4	AE64	0013666	GB0000136662	ALEUPA	0.47
	PS5	M40Z	BV9GN62	GB00BV9GN628	CLAAHM	0.47
Canlife Fidelity European	LS3	AG45	3074336	GB0030743362	ALFELA	0.95
	LS4	OI80	3201383	GB0032013830	CLFE	0.95
	LS5	JL3J	BBMJ8F2	GB00BBMJ8F22	CLFIDE	0.95
	PS4	AG56	3074347	GB0030743479	ALFEP4	0.95
	PS5	M4PM	BV9GNM8	GB00BV9GNM88	CLAADR	0.95
Canlife iShares Continental European Equity Index	LS5	O1BE	BF0ZGC3	GB00BF0ZGC39	CLJTZA	0.10
	PS5	O1BF	BF0ZGD4	GB00BF0ZGD46	CLJTZB	0.10
Canlife JPM Europe	LS3	OI62	3192432	GB0031924326	CLJEL	0.93
	LS4	OI81	3201747	GB0032017476	CLEA4	0.93
	LS5	JL5A	BBMJ948	GB00BBMJ9486	CLUORE	0.93
	PS4	OI63	3192443	GB0031924433	CLJEP	0.93
	PS5	M4RE	BV9GQ18	GB00BV9GQ183	CLAAEU	0.93
Canlife SVM Continental Europe	LS3	AG68	0950484	GB0009504845	ALCELA	0.99
	LS4	C194	3203958	GB0032039587	CSEG	0.99
	LS5	JL6T	BBMJ8Q3	GB00BBMJ8Q37	CLSVEO	0.99
	PS4	AG71	0950473	GB0009504738	ALCEPA	0.99
	PS5	M4SZ	BV9GRK4	GB00BV9GRK45	CLAAGL	0.99
Canlife Threadneedle European Select	LS3	OI68	3192476	GB0031924763	CLTEL	0.83
	LS4	C198	3203981	GB0032039819	CTESG	0.83
	LS5	JL6Y	BBMJ9B5	GB00BBMJ9B58	CLEUSE	0.83
	PS4	OI69	3192487	GB0031924870	CLTEP	0.83
	PS5	M4TE	BV9GRQ0	GB00BV9GRQ07	CLAAGS	0.83
North America Equities						
Canlife BlackRock US Opportunities	LS3	C373	3217379	GB0032173790	CLAPL	0.86
	LS4	C374	3217380	GB0032173808	CLMLAP	0.86
	LS5	JL2K	BBMJ915	GB00BBMJ9155	CLSUOP	0.86
	PS4	C375	3217313	GB0032173139	CLMLAO	0.86
	PS5	M40R	BV9GMT8	GB00BV9GMT82	CLAADL	0.86
Canlife Fidelity American	LS3	C543	3264278	GB0032642786	CLFAL3	0.93
	LS4	C544	3264289	GB0032642893	CLFAL4	0.93
	LS5	JL3I	BBMJ9G0	GB00BBMJ9G04	CLANCT	0.93
	PS4	C545	3264290	GB0032642901	CLFAP4	0.93
	PS5	M4PL	BV9GNL7	GB00BV9GNL71	CLAADQ	0.93
Canlife iShares North American Equity Index	LS5	O1B0	BF0ZGP6	GB00BF0ZGP67	CLJTZK	0.07
	PS5	O1BP	BF0ZGQ7	GB00BF0ZGQ74	CLJTZL	0.07
Canlife Neptune US Opportunities	LS3	BYX3	B39Q2V4	GB00B39Q2V46	CLCNNN	0.83
	LS4	BYX4	B39Q2W5	GB00B39Q2W52	CLNUS	0.83
	LS5	JL6D	BBMJCM7	GB00BBMJCM71	CLGELS	0.83
	PS4	BYX5	B39Q2T2	GB00B39Q2T24	CLNUO	0.83
	PS5	M4SI	BV9GR04	GB00BV9GR041	CLAAHF	0.83
Canlife North American	LS3	AE16	0012447	GB0000124478	ALNAA	0.46
	LS4	OI95	3202825	GB0032028259	CLNAM	0.46
	LS5	JL6H	BBMJ8X0	GB00BBMJ8X04	CLCMNT	0.46
	PS4	AE78	0013741	GB0000137413	ALNAPA	0.46
	PS5	M4SM	BV9GR48	GB00BV9GR488	CLAAFU	0.46
Canlife Threadneedle American Select	LS3	OI66	3192454	GB0031924540	CLTAL	0.82
	LS4	C197	3204003	GB0032040031	CTASG	0.82
	LS5	JL6W	BBMJ9D7	GB00BBMJ9D72	CLANIN	0.82
	PS4	OI67	3192465	GB0031924656	CLTAP	0.82
	PS5	M4TC	BV9GRN7	GB00BV9GRN75	CLAAGP	0.82

Fund name	Fund series	CITI	SEDOL	ISIN	MEX	OCF %
Asia Pacific excluding Japan Equities						
Canlife Asia Pacific	LS3	HH40	0013343	GB0000133438	ALPBLA	0.55
	LS4	OI96	3202836	GB0032028366	CLPAB	0.55
	LS5	JL2D	BBMJ8Y1	GB00BBMJ8Y11	CLASCP	0.55
	PS4	HH64	0014131	GB0000141316	ALPBPA	0.55
	PS5	M4OE	BV9GMF4	GB00BV9GMF47	CLAACX	0.55
Canlife iShares Pacific ex Japan Equity Index	LS5	O1BU	BF0ZGW3	GB00BF0ZGW35	CLJTZQ	0.13
	PS5	O1BV	BF0ZGX4	GB00BF0ZGX42	CLJTZR	0.13
Canlife JPM Asia Growth	LS3	OI60	3192670	GB0031926701	CLJAL	0.93
	LS4	OI82	3201736	GB0032017369	CLAA4	0.93
	LS5	JL4Y	BBMJ959	GB00BBMJ9593	CLMPSA	0.93
	PS4	OI61	3192681	GB0031926818	CLJAP	0.93
	PS5	M4RC	BV9GPZ5	GB00BV9GPZ57	CLAAER	0.93
Canlife Newton Asian Income	LS3	GGKJ	B8DX4F4	GB00B8DX4F44	CLNTAA	0.83
	LS4	GGKK	B86MR82	GB00B86MR824	CLNTAB	0.83
	LS5	JL6E	BBMJDL3	GB00BBMJDL30	CLOMEN	0.83
	PS4	GGKL	B8D6NJ0	GB00B8D6NJ08	CLNTAC	0.83
	PS5	M4SJ	BV9GR15	GB00BV9GR157	CLAAHG	0.83
Japan Equities						
Canlife iShares Japan Equity Index	LS5	O1BM	BF0ZGM3	GB00BF0ZGM37	CLJTZI	0.11
	PS5	O1BN	BF0ZGN4	GB00BF0ZGN44	CLJTZJ	0.11
Canlife Japanese	LS3	AE12	0012470	GB0000124700	ALJ	0.50
	LS4	OI87	3201725	GB0032017252	CLJA4	0.50
	LS5	JL4X	BBMJ8W9	GB00BBMJ8W96	CLJPES	0.50
	PS4	AE74	0013729	GB0000137298	ALJPA	0.50
	PS5	M4RB	BV9GPY4	GB00BV9GPY41	CLAAEO	0.50
Canlife Schroder Tokyo	LS3	BMH3	B2QYXC2	GB00B2QYXC21	CLTLS3	0.91
	LS4	BMH4	B2QYXH7	GB00B2QYXH75	CLTLS4	0.91
	LS5	JL6Q	BBMJC72	GB00BBMJC725	CLMABM	0.91
	PS4	BMH5	B2QYX88	GB00B2QYX882	CLTPS4	0.91
	PS5	M4SV	BV9GRF9	GB00BV9GRF91	CLAAAGF	0.91
Global Equities						
Canlife BlackRock Consensus 100	LS3	KDRU	BLM7DQ2	GB00BLM7DQ24	CLAACC	0.23
	LS4	KDRV	BLM7DR3	GB00BLM7DR31	CLAACD	0.23
	LS5	KDRW	BLM7DS4	GB00BLM7DS48	CLAACE	0.23
	PS4	KDRX	BLM7DT5	GB00BLM7DT54	CLAACF	0.23
	PS5	M4OF	BV9GMG5	GB00BV9GMG53	CLAACY	0.23
Canlife F&C MM Navigator Boutiques	LS3	GUV9	B4W4T55	GB00B4W4T553	CLMRGL	1.89
	LS4	GUW0	B4ZK444	GB00B4ZK4441	CLEIGL	1.89
	LS5	JL3B	BBMJCZ0	GB00BBMJCZ01	CLGCEP	1.89
	PS4	GUW1	B4YP4R3	GB00B4YP4R33	CLSRLC	1.89
	PS5	M4PE	BV9GNC8	GB00BV9GNC80	CLAAHR	1.89
Canlife Fidelity Global Focus	LS3	AG66	3074370	GB0030743701	ALFMLA	0.96
	LS4	OI92	3201394	GB0032013947	CLFMI	0.96
	LS5	JL3K	BBMJ8D0	GB00BBMJ8D08	CLALBL	0.96
	PS4	AG74	3074381	GB0030743818	ALFMPA	0.96
	PS5	M4PN	BV9GNN9	GB00BV9GNN95	CLAADS	0.96
Canlife Fidelity Global Special Situations	LS3	E101	B1CDFB9	GB00B1CDFB91	CLFLS3	0.95
	LS4	E100	B1CDFC0	GB00B1CDFC09	CLFLS4	0.95
	LS5	JL3M	BBMJBC0	GB00BBMJBC09	CLABMB	0.95
	PS4	E099	B1CDFD1	GB00B1CDFD16	CLFPS4	0.95
	PS5	M4PP	BV9GNQ2	GB00BV9GNQ27	CLAADU	0.95
Canlife Fidelity Wealthbuilder	LS3	AG75	3074358	GB0030743586	ALFWLA	1.20
	LS4	OI93	3201402	GB0032014028	CLFW	1.20
	LS5	JL3Q	BBMJ8G3	GB00BBMJ8G39	CLWEUB	1.20
	PS4	AG78	3074369	GB0030743693	ALFWPA	1.20
	PS5	M4PT	BV9GNV7	GB00BV9GNV79	CLAADY	1.20
Canlife Global Equity	LS3	AE11	0012425	GB0000124254	ALIMA	0.44
	LS4	OI85	3201424	GB0032014242	CLIM	0.44
	LS5	JL3Y	BBMJ904	GB00BBMJ9049	CLGBTY	0.44
	PS4	AE72	0013785	GB0000137850	ALIMPA	0.44
	PS5	M4QB	BV9GP22	GB00BV9GP227	CLAAEL	0.44

Fund name	Fund series	CITI	SEDOL	ISIN	MEX	OCF %
Canlife Global Equity Income	LS3	G10N	B8DGZT4	GB00B8DGZT47	CLGAEE	0.56
	LS4	G10M	B8DH014	GB00B8DH0149	CLGAAF	0.56
	LS5	JL3X	BBMJDK2	GB00BBMJDK23	CLWUGL	0.56
	PS4	G100	B8DH274	GB00B8DH2749	CLGAAG	0.56
	PS5	M4QA	BV9GP33	GB00BV9GP334	CLAAEM	0.56
Canlife Hargreaves Lansdown Multi-Manager Special Situations	LS5	N97F	BD0NW70	GB00BD0NW709	CLXXQ	1.48
Canlife Janus Henderson Global Equity Income	LS3	C540	3265367	GB0032653676	CLNSH3	0.85
	LS4	C541	3265389	GB0032653890	CLNSH4	0.85
	LS5	JL4F	BBMJ9J3	GB00BBMJ9J35	CLEQGB	0.85
	PS4	C542	3265390	GB0032653908	CLNSHP	0.85
	PS5	M4QJ	BV9GPC2	GB00BV9GPC21	CLAAFA	0.85
Canlife Investec Global Strategic Equity	LS3	BBI6	B2RKLH0	GB00B2RKLH09	CLGFR3	0.86
	LS4	BBI7	B2RKLJ2	GB00B2RKLJ23	CLGFR4	0.86
	LS5	JL4T	BBMJC94	GB00BBMJC949	CLMAB0	0.86
	PS4	BBI8	B2RKLK3	GB00B2RKLK38	CLGFRP	0.86
	PS5	M4QX	BV9GPT9	GB00BV9GPT97	CLAAAGN	0.86
Canlife Jupiter Merlin Worldwide Portfolio	LS3	MUF7	B5ZT8K2	GB00B5ZT8K24	CLAAAK	1.80
	LS4	MUF8	B61M5B2	GB00B61M5B24	CLAAAL	1.80
	LS5	JL5I	BBMJD80	GB00BBMJD806	CLWORLD	1.80
	PS4	MUF9	B667KZ1	GB00B667KZ17	CLAAAM	1.80
	PS5	M4RM	BV9GQ96	GB00BV9GQ969	CLAAFL	1.80
Canlife M&G Global Themes	LS3	G862	B1FMP46	GB00B1FMP466	CLMGB3	0.92
	LS4	G861	B1FMP57	GB00B1FMP573	CLMGB4	0.92
	LS5	JL5L	BBMJBF3	GB00BBMJBF30	CLABMH	0.92
	PS4	G860	B1FMP68	GB00B1FMP680	CLPS4G	0.92
	PS5	M4RP	BV9GQD0	GB00BV9GQD03	CLAAFO	0.92
Canlife M&G Global Dividend	LS3	GVUK	B84P7V6	GB00B84P7V64	CLOBDI	0.91
	LS4	GVUL	B88DFC3	GB00B88DFC39	CLGOBS	0.91
	LS5	JL5M	BBMJDT1	GB00BBMJDT16	CLBADI	0.91
	PS4	GVUM	B7LHP47	GB00B7LHP479	CLOBPE	0.91
	PS5	M4RQ	BV9GQF2	GB00BV9GQF27	CLAAFP	0.91
Canlife Neptune Global Equity	LS3	GUT5	B4T6MJ9	GB00B4T6MJ95	CLNPGE	0.90
	LS4	GUT6	B4T6NX0	GB00B4T6NX05	CLNPGL	0.90
	LS5	JL6A	BBMJDO2	GB00BBMJDO20	CLGE6L	0.90
	PS4	GUT7	B4T6PC3	GB00B4T6PC32	CLBRCK	0.90
	PS5	M4SF	BV9GQX0	GB00BV9GQX09	CLAAHB	0.90
Canlife Newton Global Income	LS3	GGKG	B8LF775	GB00B8LF7757	CLNTAD	0.79
	LS4	GGKH	B8LF7G4	GB00B8LF7G40	CLNTAE	0.79
	LS5	JL6F	BBMJDM4	GB00BBMJDM47	CLHIER	0.79
	PS4	GGKI	B8LF7T7	GB00B8LF7T78	CLNTAF	0.79
	PS5	M4SK	BV9GR26	GB00BV9GR264	CLAAHH	0.79
Global Emerging Markets Equities						
Canlife Allianz Emerging Markets Equity	LS3	GUU1	B4TTQJ6	GB00B4TTQJ66	CLIAAZ	1.07
	LS4	GUU2	B4TNPQ8	GB00B4TNPQ80	CLAAAZ	1.07
	LS5	JL1X	BBMJCX8	GB00BBMJCX86	CLGEKT	1.07
	PS4	GUU3	B4TNQ54	GB00B4TNQ541	CLANZR	1.07
	PS5	M4NZ	BV9GM87	GB00BV9GM877	CLAAACR	1.07
Canlife BlackRock Emerging Markets	LS3	AG63	0027054	GB0000270545	ALEM	0.90
	LS4	OI83	3201769	GB0032017690	CLEM4	0.90
	LS5	JL2E	BBMJ8S5	GB00BBMJ8S50	CLESTK	0.90
	PS4	AG64	0027065	GB0000270651	ALEMKP	0.90
	PS5	M40L	BV9GMM1	GB00BV9GMM14	CLAAADF	0.90
Canlife Janus Henderson China Opportunities	LS3	BBH7	B2RKL92	GB00B2RKL926	CLGCO3	0.86
	LS4	BBH8	B2RKL94	GB00B2RKL947	CLGCO4	0.86
	LS5	JL4C	BBMJC50	GB00BBMJC501	CLMABK	0.86
	PS4	BBH9	B2RKL95	GB00B2RKL953	CLGCOP	0.86
	PS5	M4QG	BV9GP88	GB00BV9GP888	CLAAET	0.86
Canlife Janus Henderson Emerging Markets Opportunities	LS3	BLK5	B2QG5V1	GB00B2QG5V19	CLGAEN	0.90
	LS4	BLK6	B2QG5T9	GB00B2QG5T96	CLGAE0	0.90
	LS5	JL4D	BBMJC49	GB00BBMJC493	CLMABJ	0.90
	PS4	BLK4	B2QG5Q6	GB00B2QG5Q65	CLGAEM	0.90
	PS5	M4QH	BV9GP99	GB00BV9GP995	CLAAEY	0.90

Fund name	Fund series	CITI	SEDOL	ISIN	MEX	OCF %
Canlife Invesco Perpetual Latin American	LS3	00SM	B529C14	GB00B529C140	CLPERP	1.00
	LS4	00SN	B453K23	GB00B453K237	CLERPE	1.00
	LS5	JL4N	BBMJDB3	GB00BBMJDB32	CLWOAM	1.00
	PS4	00SO	B3XDDK7	GB00B3XDDK79	CLREPT	1.00
	PS5	M4QR	BV9GPM2	GB00BV9GPM29	CLAAFS	1.00
Canlife iShares Emerging Markets Equity Index	LS5	O1BI	BF0ZGH8	GB00BF0ZGH83	CLJTZE	0.22
	PS5	O1BJ	BF0ZGJ0	GB00BF0ZGJ08	CLJTZF	0.22
Canlife Jupiter Emerging European Opportunities	LS3	AKD8	B23JZJ1	GB00B23JZJ14	CLEE03	1.26
	LS4	AKD7	B23JNG4	GB00B23JNG45	CLJEE4	1.26
	LS5	JL5D	BBMJBR5	GB00BBMJBR51	CLABMT	1.26
	PS4	AKD6	B23JNL9	GB00B23JNL97	CLEEP4	1.26
	PS5	M4RH	BV9GQ41	GB00BV9GQ415	CLAAEX	1.26
Canlife M&G Global Emerging Markets	LS3	GVUN	B6XYG02	GB00B6XYG025	CLMERA	1.02
	LS4	GVUO	B8TW9S3	GB00B8TW9S34	CLEMRR	1.02
	LS5	JL5N	BBMJDV3	GB00BBMJDV38	CLERMA	1.02
	PS4	GVUP	B88BZW7	GB00B88BZW74	CLPEAM	1.02
	PS5	M4RR	BV9GQG3	GB00BV9GQG34	CLAAFR	1.02
Canlife Neptune Emerging Markets	LS3	KKF6	B5463P4	GB00B5463P48	CLEGMK	1.20
	LS4	KKF7	B51LB92	GB00B51LB923	CLNEMK	1.20
	LS5	JL5Z	BBMJD46	GB00BBMJD467	CLGEJL	1.20
	PS4	KKF8	B5652L8	GB00B5652L84	CLNPRG	1.20
	PS5	M4SE	BV9GQW9	GB00BV9GQW91	CLAAHA	1.20
Canlife Neptune India	LS3	BYX6	B39Q2X6	GB00B39Q2X69	CLNII	1.13
	LS4	BYX7	B39Q2Y7	GB00B39Q2Y76	CLCNNI	1.13
	LS5	JL6C	BBMJCL6	GB00BBMJCL64	CLMAOD	1.13
	PS4	BYX8	B39Q2Z8	GB00B39Q2Z83	CLNIAP	1.13
	PS5	M4SH	BV9GQZ2	GB00BV9GQZ23	CLAAHE	1.13
Canlife Threadneedle Latin America	LS3	00SJ	B4NP6H8	GB00B4NP6H85	CLTHRE	0.90
	LS4	00SK	B3QZ162	GB00B3QZ1624	CLHREA	0.90
	LS5	JL7A	BBMJD91	GB00BBMJD913	CLWOLR	0.90
	PS4	00SL	B454X38	GB00B454X386	CLAMER	0.90
	PS5	M4TG	BV9GRS2	GB00BV9GRS21	CLAAACK	0.90

Fixed Interest Sectors

UK Gilts

Canlife Fixed Interest	LS3	AE06	0012254	GB0000122548	ALFIA	0.15
	LS4	O191	3201413	GB0032014135	CLFI	0.15
	LS5	JL3R	BBMJ8K7	GB00BBMJ8K74	CLINES	0.15
	PS4	AE66	0013688	GB0000136886	ALFIPA	0.16
	PS5	M4PU	BV9GNW8	GB00BV9GNW86	CLAAEB	0.16
Canlife iShares UK Gilts All Stocks Index	LS5	O1C1	BF0ZH31	GB00BF0ZH314	CLJTZX	0.11
	PS5	O1C2	BF0ZH42	GB00BF0ZH421	CLJTZY	0.11
Canlife Schroder Gilt & Fixed Interest	LS3	O158	3192711	GB0031927113	CLGFL	0.58
	LS4	C190	3203163	GB0032031634	CSGFI	0.58
	LS5	JL6N	BBMJ982	GB00BBMJ9825	CLIXED	0.58
	PS4	O159	3192722	GB0031927220	CLGFP	0.58
	PS5	M4SS	BV9GRB5	GB00BV9GRB53	CLAAGB	0.58

UK Index-Linked Gilts

Canlife Index Linked	LS3	OZ30	B0Z7MH6	GB00B0Z7MH67	CLILS	0.20
	LS4	OZ33	B0Z7R48	GB00B0Z7R486	CLILI	0.20
	LS5	JL4J	BBMJBB9	GB00BBMJBB91	CLABME	0.20
	PS4	OZ31	B0Z7V46	GB00B0Z7V462	CLILK	0.21
	PS5	M4QN	BV9GPH7	GB00BV9GPH75	CLAAFG	0.21
Canlife iShares Index Linked Gilt Index	LS5	O1BK	BF0ZGK1	GB00BF0ZGK13	CLJTZG	0.11
	PS5	O1BL	BF0ZGL2	GB00BF0ZGL20	CLJTZH	0.11

Sterling Fixed Interest

Canlife Gilt & Bond	LS3	DXD4	B3K87N6	GB00B3K87N69	ALGTBD	0.36
	LS4	DXD5	B3K87P8	GB00B3K87P83	ALGIBD	0.36
	LS5	JL3V	BBMJCP0	GB00BBMJCP03	CLGESL	0.36
	PS4	DXD8	B3K87Q9	GB00B3K87Q90	ALCTGB	0.36
	PS5	M4PY	BV9GP00	GB00BV9GP003	CLAAEI	0.36

Fund name	Fund series	CITI	SEDOL	ISIN	MEX	OCF %
Sterling Strategic Bond						
Canlife Artemis Strategic Bond	LS3	AOC8	B23WZ23	GB00B23WZ233	CLAS3	0.58
	LS4	AOC9	B23WZ56	GB00B23WZ563	CLAS4	0.58
	LS5	JL2C	BBMJBX1	GB00BBMJBX12	CLABMY	0.58
	PS4	AOD0	B23WY82	GB00B23WY822	CLASP4	0.58
	PS5	M40D	BV9GMD2	GB00BV9GMD23	CLAACW	0.58
Canlife AXA Framlington Managed Income	LS3	C552	3264579	GB0032645797	CLFHI3	0.59
	LS4	C553	3264591	GB0032645912	CLFHI4	0.59
	LS5	JL3T	BBMJ9N7	GB00BBMJ9N70	CLGHME	0.59
	PS4	C554	3264609	GB0032646092	CLFHP4	0.59
	PS5	M4PW	BV9GNY0	GB00BV9GNY01	CLAAED	0.59
Canlife Janus Henderson Fixed Interest Monthly Income	LS3	BBI0	B2RKL6	GB00B2RKL60	CLGHY3	0.70
	LS4	BBI1	B2RKL8	GB00B2RKL84	CLGHY4	0.70
	LS5	JL4E	BBMJ61	GB00BBMJ618	CLMABL	0.70
	PS4	BBI2	B2RKL9	GB00B2RKL91	CLGHYP	0.70
	PS5	M4QI	BV9GPB1	GB00BV9GPB14	CLAAEZ	0.70
Canlife Invesco Perpetual Monthly Income Plus	LS3	AKE9	B23K572	GB00B23K5723	CLMIP3	0.72
	LS4	AKE8	B23K5D8	GB00B23K5D83	CLMIP4	0.72
	LS5	JL4P	BBMJBP3	GB00BBMJBP38	CLABMR	0.72
	PS4	AKE7	B23K2S2	GB00B23K2S22	CLIP14	0.72
	PS5	M4QT	BV9GPP5	GB00BV9GPP59	CLAAFZ	0.72
Canlife M&G Optimal Income	LS3	BBG8	B2RKL4	GB00B2RKL45	CLMOI3	0.79
	LS4	BBG9	B2RKL5	GB00B2RKL51	CLMOI4	0.79
	LS5	JL50	BBMJC05	GB00BBMJC055	CLMABE	0.79
	PS4	BBH0	B2RKL6	GB00B2RKL68	CLMOIP	0.79
	PS5	M4RS	BV9GQH4	GB00BV9GQH41	CLAAAGU	0.79
Canlife Threadneedle Strategic Bond	LS3	OI70	3192498	GB0031924987	CLTSL	0.73
	LS4	C199	3203992	GB0032039926	CTSBS	0.73
	LS5	JL7B	BBMJ9C6	GB00BBMJ9C65	CLGICS	0.73
	PS4	OI71	3192506	GB0031925067	CLTSP	0.73
	PS5	M4TH	BV9GRT3	GB00BV9GRT38	CLAAACL	0.73
Sterling Corporate Bond						
Canlife Corporate Bond	LS3	C379	3220452	GB0032204520	CLBML3	0.32
	LS4	C380	3220463	GB0032204637	CLBML4	0.32
	LS5	JL2U	BBMJ9F9	GB00BBMJ9F96	CLOPRT	0.32
	PS4	C381	3220474	GB0032204744	CLBM94	0.32
	PS5	M40Y	BV9GN51	GB00BV9GN511	CLAAHL	0.45
Canlife F&C Responsible Sterling Bond	LS3	GUU7	B4TTM8	GB00B4TTM86	CLFETH	0.58
	LS4	GUU8	B4TTN39	GB00B4TTN396	CLFEIB	0.58
	LS5	JL2W	BBMJCW7	GB00BBMJCW79	CLGETK	0.58
	PS4	GUU9	B4TTPY4	GB00B4TTPY43	CLCFMS	0.58
	PS5	M4PJ	BV9GNJ5	GB00BV9GNJ59	CLAAHW	0.58
Canlife Invesco Perpetual Corporate Bond	LS3	XA94	B06T9X6	GB00B06T9X65	CLIPC1	0.66
	LS4	XA34	B06T9Z8	GB00B06T9Z89	CLIPC2	0.66
	LS5	JL4K	BBMJ9Z9	GB00BBMJ9Z92	CLABNJ	0.66
	PS4	XA35	B06T9Y7	GB00B06T9Y72	CLIPC3	0.66
	PS5	M4Q0	BV9GPJ9	GB00BV9GPJ99	CLAAFI	0.66
Canlife iShares Corporate Bond Index	LS5	O1BG	BF0ZGF6	GB00BF0ZGF69	CLJZC	0.11
	PS5	O1BH	BF0ZGG7	GB00BF0ZGG76	CLJZD	0.11
Canlife JPM Sterling Corporate Bond	LS3	OI72	3192692	GB0031926925	CLUHL	0.68
	LS4	OI90	3201758	GB0032017583	CLUKH4	0.68
	LS5	JL5C	BBMJ960	GB00BBMJ9601	CLMECP	0.68
	PS4	OI73	3192700	GB0031927006	CLUHP	0.68
	PS5	M4RG	BV9GQ30	GB00BV9GQ308	CLAAEW	0.68
Canlife M&G Corporate Bond	LS3	ERN1	B626M67	GB00B626M671	CLMGCO	0.65
	LS4	ERNO	B626M78	GB00B626M788	CLMGCB	0.65
	LS5	JL5K	BBMJCR2	GB00BBMJCR27	CLGEHI	0.65
	PS4	ERN2	B626M89	GB00B626M895	CLMGCR	0.65
	PS5	M4RO	BV9GQC9	GB00BV9GQC95	CLAAFN	0.65
Canlife M&G Short Dated Corporate Bond	LS3	K9GK	BKX4S93	GB00BKX4S931	CLAABI	0.57
	LS4	K9GM	BKX4SB5	GB00BKX4SB59	CLAABJ	0.57
	LS5	K9GL	BKX4SC6	GB00BKX4SC66	CLAABK	0.57
	PS4	K9GN	BKX4SD7	GB00BKX4SD73	CLAABL	0.57
	PS5	M4RU	BV9GQK7	GB00BV9GQK79	CLAAGW	0.57

Fund name	Fund series	CITI	SEDOL	ISIN	MEX	OCF %
Canlife M&G Strategic Corporate Bond	LS3	ERN3	B626M90	GB00B626M903	CLMGSC	0.66
	LS4	ERN4	B626MB2	GB00B626MB21	CLMSCB	0.66
	LS5	JL5Q	BBMJCS3	GB00BBMJCS34	CLGEMA	0.66
	PS4	ERN5	B626MC3	GB00B626MC38	CLMSCR	0.66
	PS5	M4RV	BV9GQL8	GB00BV9GQL86	CLAAGX	0.66
Canlife Short Duration Corporate Bond	LS3	K9GP	BKX4S59	GB00BKX4S592	CLAABE	0.20
	LS4	K9GQ	BKX4S60	GB00BKX4S600	CLAABF	0.20
	LS5	K9GO	BKX4S71	GB00BKX4S717	CLAABG	0.20
	PS4	K9GR	BKX4S82	GB00BKX4S824	CLAABH	0.20
	PS5	M4SY	BV9GRJ3	GB00BV9GRJ30	CLAAGJ	0.20

Sterling High Yield

Canlife Threadneedle High Yield Bond	LS3	BFL5	B2RKL8	GB00B2RKL82	CLTHY3	0.73
	LS4	BFL6	B2RKL0	GB00B2RKL07	CLTHY4	0.73
	LS5	JL6Z	BBMJC38	GB00BBMJC386	CLMABI	0.73
	PS4	BFL7	B2RKL1	GB00B2RKL14	CLTHYP	0.73
	PS5	M4TF	BV9GRR1	GB00BV9GRR14	CLAAGT	0.73

Global Fixed Interest

Canlife BlackRock Fixed Income Global Opportunities	LS3	AE09	0012436	GB0000124361	ALIFIA	0.64
	LS4	OI86	3201800	GB0032018003	CLIFI4	0.64
	LS5	JL2G	BBMJ8V8	GB00BBMJ8V89	CLBGAL	0.64
	PS4	AG60	0024077	GB0000240779	ALIFPA	0.64
	PS5	M40N	BV9GMP4	GB00BV9GMP45	CLAADH	0.64
Canlife Global Bond	LS3	G10R	B8CJ334	GB00B8CJ3340	CLGAAA	0.46
	LS4	G10Q	B8CJ3X4	GB00B8CJ3X44	CLGAAB	0.46
	LS5	JL3W	BBMJDJ1	GB00BBMJDJ18	CLWOAL	0.46
	PS4	G10P	B8DGZR2	GB00B8DGZR23	CLGAAD	0.46
	PS5	M4PZ	BV9GP11	GB00BV9GP110	CLAAEJ	0.46
Canlife iShares Overseas Corporate Bond Index	LS5	O1BQ	BF0ZGR8	GB00BF0ZGR81	CLJZM	0.11
	PS5	O1BR	BF0ZGS9	GB00BF0ZGS98	CLJZM	0.11
Canlife iShares Overseas Government Bond Index	LS5	O1BS	BF0ZGT0	GB00BF0ZGT06	CLJZ0	0.12
	PS5	O1BT	BF0ZGV2	GB00BF0ZGV28	CLJZP	0.12

Global High Yield

Canlife Global High Yield Bond	LS3	JO6M	BD1NL61	GB00BD1NL619	CLAAAN	0.97
	LS4	JO6O	BD1NL72	GB00BD1NL726	CLAAAO	0.97
	LS5	JO6N	BD1NL83	GB00BD1NL833	CLAAAP	0.97
	PS4	JO6P	BD1NLB6	GB00BD1NLB64	CLAAAR	0.97
	PS5	M4QC	BV9GP44	GB00BV9GP441	CLAAEP	0.97
Canlife Threadneedle Emerging Markets Bond	LS3	BBH4	B2RKL69	GB00B2RKL694	CLTEM3	0.75
	LS4	BBH5	B2RKL70	GB00B2RKL702	CLTEM4	0.75
	LS5	JL6X	BBMJC27	GB00BBMJC279	CLMABH	0.75
	PS4	BBH6	B2RKL81	GB00B2RKL819	CLTEMP	0.75
	PS5	M4TD	BV9GRP9	GB00BV9GRP99	CLAAGR	0.75

Property

UK Direct Property

Canlife UK Property	LS3	ML88	0012373	GB0000123736	ALPRA	0.27
	LS4	C201	3204025	GB0032040254	CUKP	0.27
	LS5	JL7F	BBMJ8M9	GB00BBMJ8M98	CLTYOP	0.27
	PS4	AE80	0013763	GB0000137637	ALPRP	0.27
	PS5	M4TM	BV9GRZ9	GB00BV9GRZ97	CLAACQ	0.27

Global Property

Canlife Fidelity Global Property	LS3	W708	B1TR4W8	GB00B1TR4W87	CL6TYR	0.95
	LS4	W707	B1TR4X9	GB00B1TR4X94	CL5TYP	0.95
	LS5	JL3L	BBMJBM0	GB00BBMJBM07	CLABM0	0.95
	PS4	W709	B1TR4Y0	GB00B1TR4Y02	CLFR6T	0.95
	PS5	M4PO	BV9GNP1	GB00BV9GNP10	CLAADT	0.95
Canlife Schroder Global Cities Real Estate	LS3	W632	B1TRLH2	GB00B1TRLH27	CLSGPL	0.92
	LS4	W630	B1TRLJ4	GB00B1TRLJ41	CLSPLA	0.92
	LS5	JL60	BBMJBN1	GB00BBMJBN14	CLABMP	0.92
	PS4	W631	B1TRLK5	GB00B1TRLK55	CLSGPP	0.92
	PS5	M4ST	BV9GRC6	GB00BV9GRC60	CLAAGC	0.92

Fund name	Fund series	CITI	SEDOL	ISIN	MEX	OCF %
-----------	-------------	------	-------	------	-----	-------

Other Fund Sectors

Money Market

Canlife Money	LS3	AE07	0012298	GB0000122985	ALGMA	0.00
	LS4	OI77	3201844	GB0032018441	CLM4	0.00
	LS5	JL5W	BBMJ8L8	GB00BBMJ8L81	CLEYN0	0.00
	PS4	AE68	0013707	GB0000137074	ALGMPA	0.00
	PS5	M4SB	BV9GQS5	GB00BV9GQS55	CLAAHJ	0.00
	PS5	M4SB	BV9GQS5	GB00BV9GQS55	CLAAHJ	0.00

Commodity/Energy

Canlife BlackRock Gold & General	LS3	BBA9	B2RKKV7	GB00B2RKKV77	CLBGG3	1.05
	LS4	BDM4	B2RKKW8	GB00B2RKKW84	CLBGG4	1.05
	LS5	JL2H	BBMJZ3	GB00BBMJZ36	CLMABD	1.05
	PS4	BDM5	B2RKKX9	GB00B2RKKX91	CLBGGP	1.05
	PS5	M400	BV9GMQ5	GB00BV9GMQ51	CLAADI	1.05
	PS5	M400	BV9GMQ5	GB00BV9GMQ51	CLAADI	1.05
Canlife Global Resource	LS3	I8HT	B8HJHP9	GB00B8HJHP95	CLSR0U	0.82
	LS4	I8HU	B7GVRN7	GB00B7GVRN75	CLUORS	0.82
	LS5	JL4A	BBMJDR9	GB00BBMJDR91	CLREOS	0.82
	PS4	I8HV	B836XK1	GB00B836XK15	CLESGB	0.82
	PS5	M4QE	BV9GP66	GB00BV9GP664	CLAADZ	0.82
Canlife JPM Natural Resources	LS3	BBH1	B2RKL14	GB00B2RKL140	CLJNR3	0.93
	LS4	BBH2	B2RKMJ9	GB00B2RKMJ97	CLJNR4	0.93
	LS5	JL5B	BBMJC16	GB00BBMJC162	CLMABG	0.93
	PS4	BBH3	B2RKL58	GB00B2RKL587	CLJNRP	0.93
	PS5	M4RF	BV9GQ29	GB00BV9GQ290	CLAAEV	0.93

Protected/Guaranteed

Canlife Investec Multi Asset Protector	LS3	DXD0	B3K87K3	GB00B3K87K39	ALCIMA	1.11
	LS4	DXD1	B3K87L4	GB00B3K87L46	ALCMAP	1.11
	LS5	JL4U	BBMJCN8	GB00BBMJCN88	CLGEAC	1.11
	PS4	DXD6	B3K87M5	GB00B3K87M52	ALCIAP	1.11
	PS5	M4QY	BV9GPV1	GB00BV9GPV10	CLAAEA	1.11

Specialist

Canlife BlackRock UK Absolute Alpha	LS3	ATG7	B29HSJ0	GB00B29HSJ01	CLA	0.93
	LS4	ATG8	B29HS34	GB00B29HS343	CLB	0.93
	LS5	JL2F	BBMJD35	GB00BBMJD350	CLGE7L	0.93
	PS4	ATG9	B29HSD4	GB00B29HSD49	CLU	0.93
	PS5	M40P	BV9GMR6	GB00BV9GMR68	CLAADJ	0.93
Canlife BlackRock European Absolute Alpha	LS3	GUT8	B4W3QR3	GB00B4W3QR31	CLBLRO	0.98
	LS4	GUT9	B4TD9X3	GB00B4TD9X36	CLACKR	0.98
	LS5	JL2I	BBMJBY2	GB00BBMJBY29	CLABMZ	0.98
	PS4	GUU0	B4TDBG0	GB00B4TDBG07	CLALLI	0.98
	PS5	M40M	BV9GMN2	GB00BV9GMN21	CLAADG	0.98
Canlife Global Infrastructure	LS3	I8HX	B7VBF50	GB00B7VBF506	CLERTN	0.87
	LS4	I8HW	B7WBSY9	GB00B7WBSY91	CLRUF5	0.87
	LS5	JL3Z	BBMJDS0	GB00BBMJDS09	CLINFR	0.87
	PS4	I8HY	B8H7PB5	GB00B8H7PB53	CLSAUR	0.87
	PS5	M4QD	BV9GP55	GB00BV9GP557	CLAAEQ	0.87
Canlife Newton Real Return	LS3	GGKD	B8LF816	GB00B8LF8169	CLNTAG	0.79
	LS4	GGKE	B8LF883	GB00B8LF8839	CLNTAH	0.79
	LS5	JL6G	BBMJDN5	GB00BBMJDN53	CLERAL	0.79
	PS4	GGKF	B8LF8M7	GB00B8LF8M74	CLNTAI	0.79
	PS5	M4SL	BV9GR37	GB00BV9GR371	CLAAHI	0.79
Canlife Strategic Return	LS3	KIOW	BMQWHW4	GB00BMQWHW47	CLAACG	0.76
	LS4	KIOX	BMQWHX5	GB00BMQWHX53	CLAAACH	0.76
	LS5	KIOY	BMQWHY6	GB00BMQWHY60	CLAACI	0.76
	PS4	KIOZ	BMQWHZ7	GB00BMQWHZ77	CLAACJ	0.76
	PS5	MH60	BZ0NTT5	GB00BZ0NTT52	CLXXK	0.76
Canlife Total Return	LS3	I7TJ	B8GBHC3	GB00B8GBHC32	CLNTAO	1.08
	LS4	I7TI	B88KR51	GB00B88KR519	CLATRE	1.08
	LS5	JP4P	BBMJQ8	GB00BBMJQ84	CLTOUN	1.08
	PS4	I7TK	B7LK6Q5	GB00B7LK6Q58	CLNPTA	1.08
	PS5	M4TI	BV9GRV5	GB00BV9GRV59	CLAACM	1.08

Sedol Masterfile is a Trade Mark of The London Stock Exchange

Other useful guides

If you would like to know more about investments and the types of funds that we offer, then we have a range of other guides that might be of interest to you:

Understanding asset types and sectors (reference MKT579)

A guide to the four main types of asset and how we group together similar types of funds.

Understanding diversification (reference MKT580)

This guide explains what diversification is and why it can be useful to invest into different sorts of assets and funds.

Understanding volatility (reference MKT581)

A guide to what volatility is, how we measure it using standard deviation and how it can help in understanding how a fund might behave.

Fund volatility and performance (reference MKT582)

Details on the range of funds that we offer access to including information on past performance and volatility. Volatility is expressed as four groups (with group 4 being the most volatile).

Monthly performance update and fund charges

Every month we publish updated performance data over various time periods.

Life Series 3 funds (reference ID6778)

Life Series 4 funds (reference ID6779)

Life Series 5 funds (reference ID6780)

Pension Series 4 funds (reference ID6781)

Pension Series 5 funds (reference ID6792)

All these documents are available on our website www.canadalife.co.uk or by calling us on **0345 6060 708**.

Additional information

Derivatives

Many funds have the ability to use derivatives with some making more use than others. Derivatives cover a wide range of types of investment but essentially the term describes an asset for which the value is 'derived' from the value of something else, such as a stock market index or a particular share's price. Derivatives depend on the ability of the companies involved to be able to meet their obligations, so some derivatives are seen as riskier than others. The use of derivatives may be mentioned within the fund objective, but is commonly found in the more detailed information provided by fund managers about their funds on their own website.

Canlife UK Property fund

Specific costs of running the UK Property fund are deducted from the income received. This is primarily a percentage of rents received. This will affect those funds that may invest in the UK Property fund such as Managed (0%–35% shares), Managed (20%–60% shares) and Multiple Investment.

Property held in Canada Life property funds may not be readily saleable. This means that investors in property funds may not always be able to realise their investments when they choose. In such cases Canada Life may postpone the encashment of the units in the fund by up to six months. The value of property is generally a matter of a valuer's opinion rather than fact. Costs of buying and selling real property are generally much higher than for other types of assets. Property investments may be subject to significantly wider price spreads than bonds and equities which could affect the valuation of the fund by up to 8.00%.

The Fund now invests in the CF Canlife UK Property ACS as well as investing in properties directly.

Canlife Fidelity Global Property
Canlife Schroders Global Cities Real Estate

These funds differ from traditional property funds (that invest only into physical property) as they invest primarily in the shares of property companies and REITs (Real Estate Investment Trusts). This can mean that they may have volatility similar to equity funds over the short-term. Over the long-term the performance of property share funds should be similar to that of the underlying property markets that they invest in.

Canlife BlackRock UK Absolute Alpha
Canlife BlackRock European Absolute Alpha

In addition to the standard fund charges, BlackRock may take a performance fee if the fund outperforms a stated benchmark. If a fee is payable it is taken daily from the unit price of the fund. Further details of how the fee is calculated are available on request.

Canlife Investec Multi Asset Protector

The 80% protection only applies to the underlying Investec fund into which the Canada Life fund invests. The Canada Life fund protection level could be higher or lower than 80% due to factors such as cashflow, investment timing and tax.

Investors should note that it is intended that the protection level of 80%, of the underlying Investec fund share price, will be provided under a derivative contract with a single counterparty, currently Deutsche Bank. If the counterparty is unable to meet its obligations under the derivative contract or where there is no derivative in place, then the fund will not have the same level of protection and there will be a risk that the price could fall below the 80% level.

If the underlying Investec fund's share price falls, the fund may have large allocations to cash. In this situation keeping the fund open may no longer be in the best interests of investors. At this stage, Investec would consider winding up the fund. There may be other circumstances which may also cause Investec to wind up the fund such as the counterparty becoming insolvent. In the event of Investec winding up the fund shareholders, including Canada Life, will be sent their proportionate share of the proceeds from the sale of the assets of the fund.

Global Emerging Markets Equities funds

These funds share a common approach in investing primarily in shares in countries where stock markets are not as well developed as the UK. This means that they are likely to be in the most volatile group of funds (group 4) and may be more likely to see frequent, possibly large, movements in price.

Canlife Investec UK Smaller Companies
Canlife Schroders UK Smaller Companies

These funds aim to generate returns by looking for opportunities to invest in smaller companies in the UK. Shares in smaller companies can be riskier than those of large companies as the shares can be more difficult to buy and sell and their value is more likely to move up and down over short periods. These funds are often in the most volatile group (group 4).



Canada Life

Canada Life Limited, registered in England no. 973271. Registered office: Canada Life Place, Potters Bar, Hertfordshire EN6 5BA.
Telephone: 0345 6060708 Fax: 01707 646088 www.canadalife.co.uk Member of the Association of British Insurers.

Canada Life Limited is authorised by the Prudential Regulation Authority and regulated by the Financial Conduct Authority and the Prudential Regulation Authority.