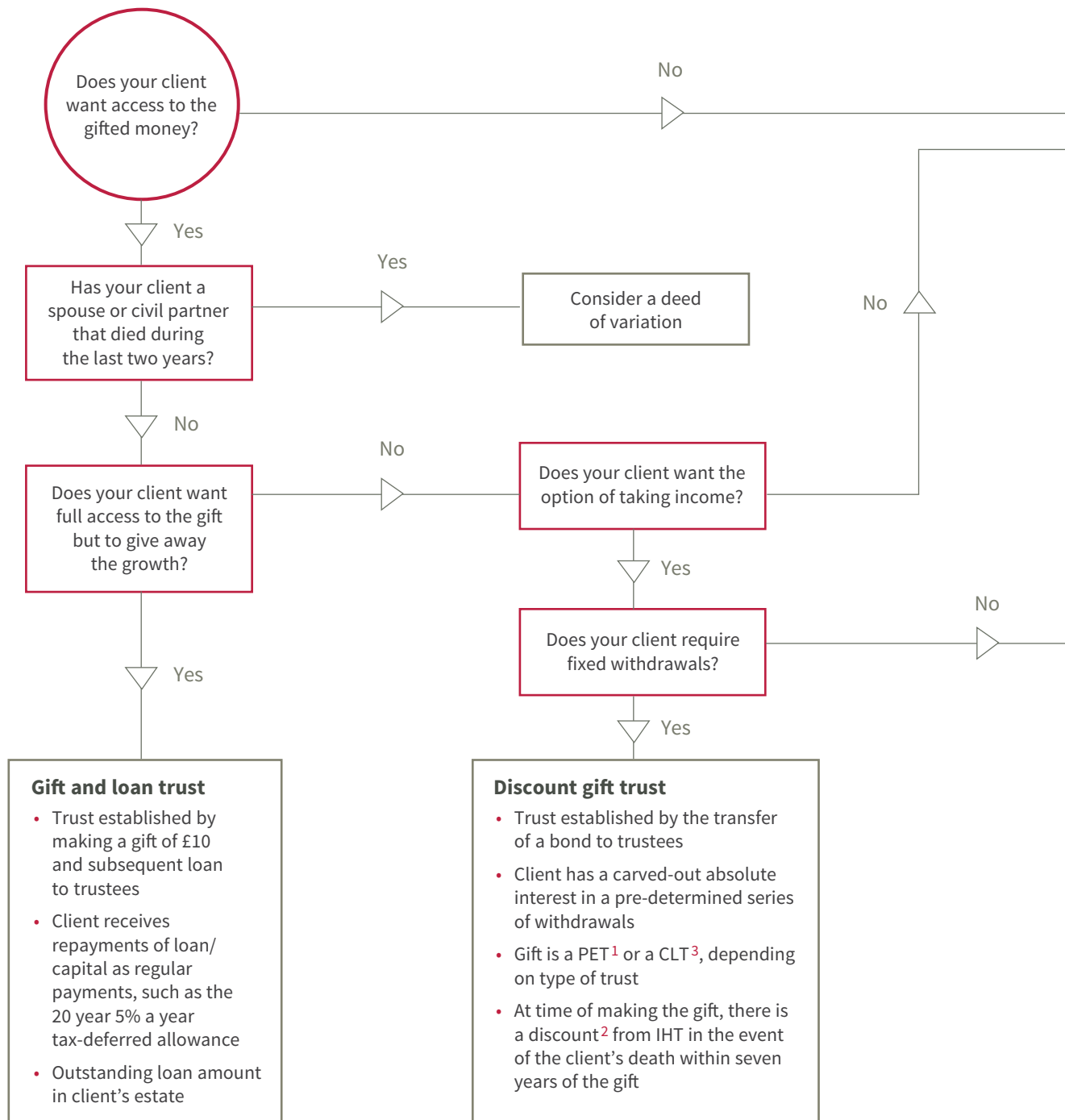


## **Choosing an appropriate trust**

### Trust



# Choosing an appropriate trust solution



## Notes

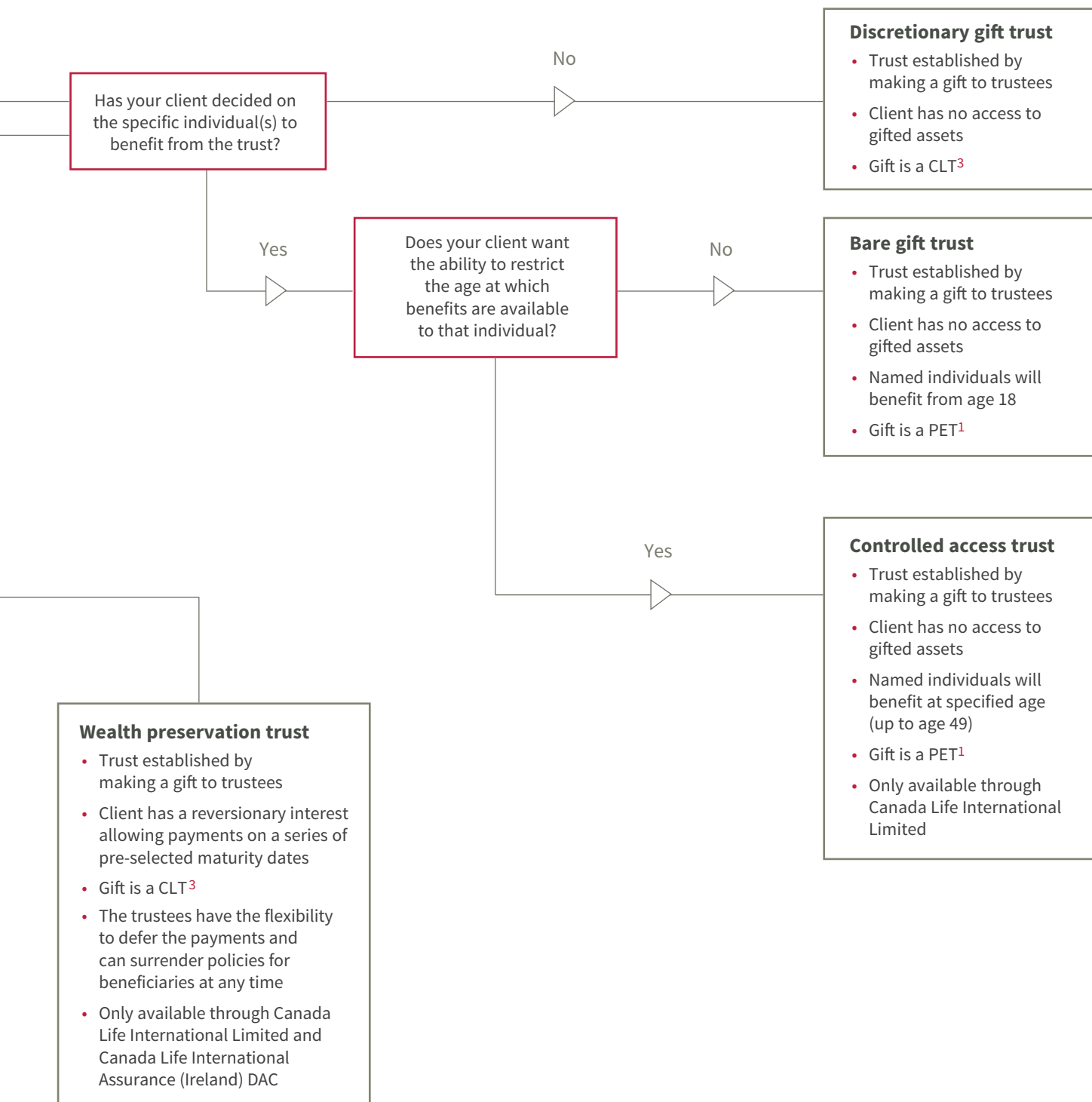
This flowchart concentrates on inheritance tax (IHT) mitigation and shows only some of the possible uses of Canada Life's trusts. Clients may have needs other than minimising their IHT liability and each case should be assessed individually.

If you are contemplating making chargeable lifetime transfers for IHT purposes, you should make sure that expert tax advice is taken regarding the impact of this transfer on other arrangements entered into previously or planned in the future.

Clients should consider making a will (or reviewing all existing wills) before additional estate planning is undertaken. All of the above trusts are for U.K. domiciled and resident clients. For non U.K. domiciled clients please contact your Canada Life account manager to discuss the excluded property trust.

The flowchart should be used in conjunction with the brochures and client case studies available from the Canada Life group.

For more information on Canada Life's estate planning solutions and trusts contact your Canada Life account manager, call 0345 722 6232 or visit [www.canadalife.co.uk/estate-planning](http://www.canadalife.co.uk/estate-planning)



1 Potentially exempt transfer (PET)

2 The individual's circumstances (such as age, gender, health and income requirements) will dictate the discount available.

3 Chargeable lifetime transfer (CLT)



## About Canada Life

The Canada Life Assurance Company provides insurance and wealth management products and services through domestic operations in Canada and international operations in Ireland, Isle of Man and the U.K., as well as branch and subsidiary operations in other countries. Canada Life is a subsidiary of The Great-West Life Assurance Company and a member of the Power Financial Corporation group of companies.

[www.canadalife.co.uk/adviser](http://www.canadalife.co.uk/adviser) [www.canadalife.co.uk/international](http://www.canadalife.co.uk/international)



### Delivering accessible Technical Services

- A dedicated national team allowing direct access to industry specialists with more than 250 years of experience in taxation, trusts, estate planning and pensions between them.
- Technical information delivered personally to you by experts, in the right way, at the right time, for both UK and international investment business.

Additional support is available from:

Technical Services:

[www.canadalife.co.uk/adviser/ican-academy](http://www.canadalife.co.uk/adviser/ican-academy)

**This document is based on our understanding of current legislation, law (English and Manx law respectively) and HM Revenue & Customs practice as at June 2019. It is provided solely for general consideration. We recommend that investors take their own professional tax advice.**

### For information on estate planning solutions and trusts:

#### Canada Life

– your Account Manager or Technical Support on [ican@canadalife.co.uk](mailto:ican@canadalife.co.uk)



#### Canada Life International and Canada Life International Assurance (Ireland) DAC

– your Account Manager or Technical Support on **01624 820377**



Canada Life International Limited, registered in the Isle of Man no. 33178. Registered office: Canada Life House, Isle of Man Business Park, Douglas, Isle of Man IM2 2QJ. Telephone: +44 (0) 1624 820200 Fax: +44 (0) 1624 820201 [www.canadalifeint.com](http://www.canadalifeint.com) Member of the Association of International Life Offices.

CLI Institutional Limited, registered in the Isle of Man no. 108017C. Registered office: Canada Life House, Isle of Man Business Park, Douglas, Isle of Man IM2 2QJ. Telephone: +44 (0) 1624 820200 Fax: +44 (0) 1624 820201 Member of the Association of International Life Offices.

Canada Life International Assurance (Ireland) DAC, registered in Ireland no. 440141. Registered office: Irish Life Centre, Lower Abbey Street, Dublin 1, Ireland. Telephone: +44 (0) 1624 820200 Fax: +44 (0) 1624 820201 [www.canadalifeinternational.ie](http://www.canadalifeinternational.ie) Member of the Association of International Life Offices.

Canada Life International Limited and CLI Institutional Limited are Isle of Man registered companies authorised and regulated by the Isle of Man Financial Services Authority. Canada Life International Assurance (Ireland) DAC is authorised and regulated by the Central Bank of Ireland.



This paper is made from recycled materials